

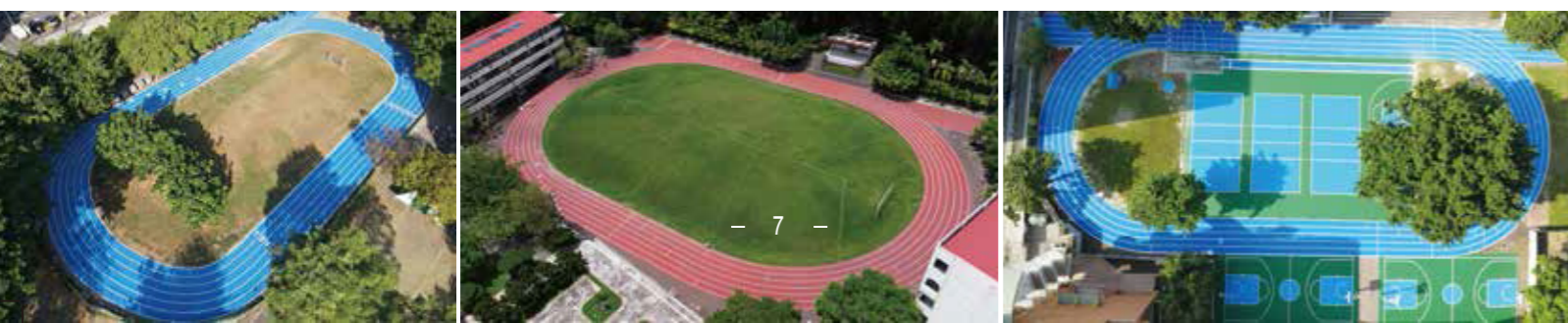
ADVANCED ATHLETIC TRACK SURFACE

OSSTRAX-Elite

- MOLDED AND VULCANIZED RUBBER LAYER
- RESISTANCE TO SPIKE
- RESISTANCE TO UV
- VERTICAL DEFORMATION <2.0mm
- WA CERTIFIED SURFACE PRODUCT (13.5mm)
- FOR OUTDOOR AND INDOOR USE.
- GREENGUARD GOLD CERTIFICATION
- CONFORM TO EN14877 STANDARD



FAST • COMFORTABLE • PERFORMANCE



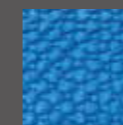
Characteristics of Protraxx-Elite

OSSTRAX-Elite utilizes the latest in performance surface technologies. OSSTRAX-Elite is constructed from advanced vulcanized rubber and features a durable and revolutionary omni-directional top layer. This new design provides increased drainage for improved surface contact and superior spike resistance. The bottom layer's innovative Energy Return Design provides greater energy management and return. OSSTRAX-Elite is built for elite performance !

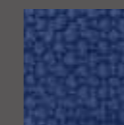
COLOR RANGE



PE-10
Red



PE-23
Sky blue



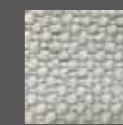
PE-28
Navy blue



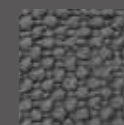
PE-30
Light green



PE-33
Lake green



PE-40
Light grey



PE-42
Deep grey

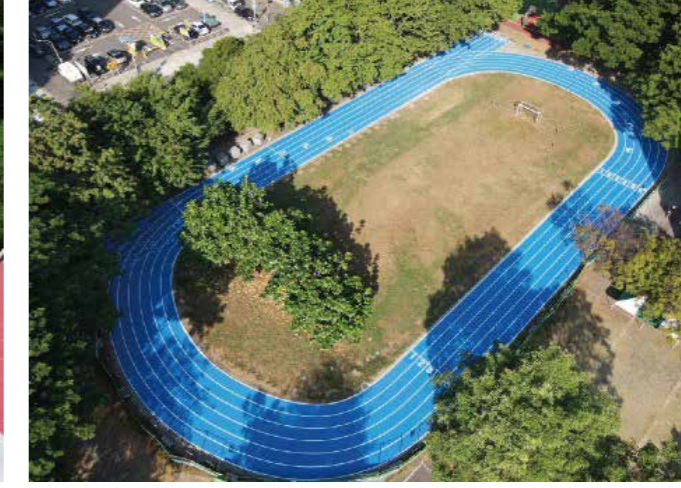


PE-50
Yellow

SPECIFICATION

THICKNESS	8mm, 10mm, 13.5mm	
ROLL WIDTH	90cm~140cm	36"~ 47"
ROLL LENGTH	6M to 15M	19'8" to 49'2.6"





OSSTRAX-ELITE

PERFORMANCE

FAST. STABLE . OUTSTANDING



OUTSTANDING DURABILITY

Vulcanized rubber makes a strong material even stronger

EMBOSSED TEXTURE SURFACES

Granule-free, uniform texture

EASY TO MAINTAIN

Non-porous surface
No coating, no granules fall

